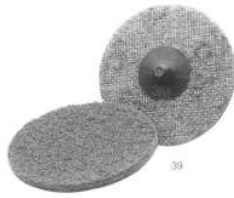


Scotch-Brite Roloc Surface Conditioning Discs

- Used to quickly remove cut cork or paper gaskets and for-in-place gasketing materials prior to the assembling of power train components.



- Quick 1/2 turn on, 1/2 turn off
- For steel parts.

RL07480 2" Coarse (Brown)
25 per box

RL07485 3" Coarse (Brown)
25 per box

3M Roloc Bristle Discs

- The ideal tool to replace scrapers, wire wheels and chemical gasket stripper.
- Bristles ride over surface cleaning contaminants without gouging the surface.
- Use with Roloc holder assembly



RL07524 2" 50 Grade (Green)
10 per box

RL07526 3" 50 Grade (Green)
10 per box

Scotch-Brite Multi-Flex Abrasive Sheet Rolls



- Thin, ultra-flexible 4"x8" sheets
- Great for quick scuffing of irregular surfaces— wet or dry. Reusable.

RL07521 Roll of 60 Sheets
General Purpose (Maroon)

Three-M-ite Elek-Tro-Cut Cloth Utility Rolls



Use for smoothing rough spots, deburring and cleaning metal surfaces.



RL05008 1" X 50 Yards 120 Grade



BRB40



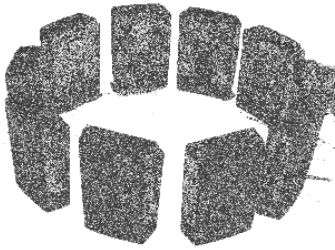
BRB44

Carbon Steel Hand Brushes

For general surface cleaning and preparation for refinishing. Used to remove paint, rust scale, corrosion, and dirt.

BRB40 Solid Block, 6" brush length, 14" overall length

BRB44 Solid Wood Block, 5-1/4" brush length, 13/16" bristle length, 10" overall length



SURFACE GRINDING SEGMENTS

Segments come in quantities of 8, 10, and 12.

PART #	MANUFACTURER	SIZE	MATERIAL
AASG-12	AMC	56 x 16 x 100mm	Silicone Carbide
CGBC-10B	BERCO	65 x 25 x 100mm	Silicone Carbide
KB-8	BERCO	65 x 25 x 85mm	Silicone Carbide
KB-35	KANSAS INSTR.	1-63/64" x 21/32" x 3-9/16"	Silicone Carbide
KBK-10	KWIK-WAY	65 x 20 x 100mm	Silicone Carbide
BAR8247-1	KWIK-WAY	65 x 20 x 100mm	GP
BAR8247R-1	KWIK-WAY	65 x 20 x 100mm	RUBY
KBS-8	PETERSON	3-1/8" x 13/16" x 3-1/8"	Silicone Carbide
KB-35	PETERSON	1-63/64" x 21/32" x 3-9/16"	Silicone Carbide
SC4-C8239-10B	ROBBI	59 x 21 x 120mm	Silicone Carbide
SC4-C8239-10B	ROGERS RMC	59 x 21 x 120mm	Silicone Carbide
KBS-10/KBS-8	STORM VULCAN-	3-1/8" x 13/16" x 3-1/8"	Silicone Carbide
CGBC-10B	SCLEDUM	65 x 25 x 100mm	Silicone Carbide
CGBC-10B	WINONA / VAN NORMAN	65 x 25 x 100mm	Silicone Carbide
CGBC-10B	ZANROSSO	65 x 25 x 100mm	Silicone Carbide
BAR8234-1	ZANROSSO	65 x 25 x 100mm	GP
BAR8234R-1	ZANROSSO	65 x 25 x 100mm	RUBY
BAR8234SP-1	ZANROSSO	65 x 25 x 100mm	Salt & Pepper

HORIZONTAL GRINDING WHEELS



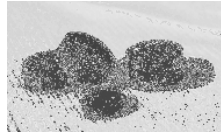
PRODUCT #	MANUFACTURER	SIZE	GRIT
REK-545	KWIK-WAY (Lempco)	12" x 3" x 1-1/2"	16
REK-545B		14" x 3" x 1-1/2"	24
REK-545BL		16" x 3" x 1-1/2"	24
REK-48F	PETERSON	14" x 1-1/2" x 4"	30
REK-562	WINONA VN	14" x 2" x 2"	16

* OTHER WHEELS AVAILABLE BY SPECIAL ORDER- CONTACT US FOR MORE DETAILS

HIGH QUALITY CBN & PCDS REPLACEMENT INSERTS

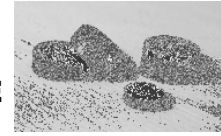
CBN - Cubic Boron Nitride Inserts. Cutter buttons for your CBN milling head. These inserts provide clean, fresh cuts on all shop work; aluminum alloy, cast iron and diesel heads.

Our inserts contain 85% - 95% C.B.N. content with Titanium Nitride Bond. Our competitors could be as low as 55% C.B.N. content with inferior bond.



ROUND REVERSIBLE

Product Number	Diameter	Thickness
SER1002	3/8"	.125
SER1002B	3/8"	.1875
SER1002S	3/8"	.1875
SER1003	1/2"	.125
SER1004	1/2"	.1875
SER1004S	1/2"	.1875
SER1007	1/4"	.070



ROUND SINGLE SIDE

Product Number	Diameter	Thickness
SER1005	3/8"	.125
SER1006	3/8"	.1875
SER1006S	3/8"	.1875
SER1015	1/2"	.125
SER1016	1/2"	.1875
SER1016S	1/2"	.1875
SER1017	1/4"	.070

Polychystalline Inserts (Aluminum Cutting)



Product Number	Diameter	Thickness
REPCDS-12	1/2" (Single Sided)	.128
REPCDS-38	3/8"	.128
REPCDS-25	1/4"	.070

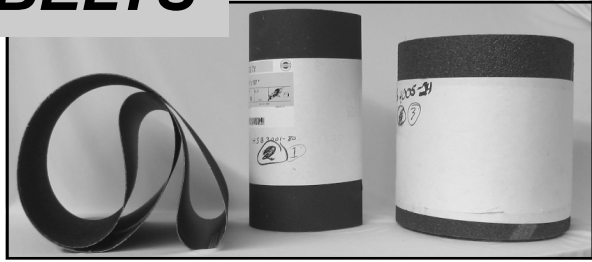
Desmond Dressers for Surface Grinders

No.	Machine Model	Description
REBB-10	Storm RT-7Y, RT-17Y, 360A	Complete Assembly
REBB-14	Van Norman, Peterson	Set of 14 loose cutters
REBB-17	Peterson (Dry Grinder)	Complete Assembly
REBB-17A	Berco Late Model 1200 & 1550	Set of 8 cutters & 5 spacers
REBB-10L	Kwik-Way, Lemppo	Complete Assembly
REBB-18	885, 855-5,856,860	Set of 14 loose cutters
RE5H	Berco Early Model 1200 & 1550	Set of 4 cutters & 2 spacers



HEAD SURFACING SUPPLIES

HEAD SURFACING BELTS



**Select from three types of abrasives:
Silicon Carbide, Ceramic & Zirconia
Alumina/Aluminum Oxide.**
Each belt is specially constructed with a high quality, heat resistant bond to keep the abrasive grains anchored in place. The super-tough backing won't crack, tear or fray. Reversing the belt allows you to increase its life up to 20 additional heads

Guide to Abrasive Compounds

Silicon Carbide

36-40 Grit
High quality black abrasive. Ideally suited for cast iron, but can resurface aluminum. Light or no down pressure is recommended.

60-80 Grit
High quality black abrasive. Designed specifically for resurfacing aluminum due to its finer grit. Down pressure not recommended.

Ceramic

36-40 Grit
Premium quality abrasive. Perfectly uniform ceramic grain. Longest lasting belts. Designed for heavy down pressure. For cast iron or steel.

Zirconia Alumina

High quality abrasive. Ideally suited for cast iron, but can resurface aluminum. Light or no down pressure is recommended.

*Other sizes and types available
by special order*

PRODUCT #	DESCRIPTION
CERAMIC	
HSB-1031-36	15"x127-1/2" x 36GR
SILICON CARBIDE	
HSB-3000-40	14"x103" 40GR
HSB-3002-40	12"x 79" 40GR
HSB-3003-40	11-7/8" x 79" 40GR
HSB-3003-60	11-7/8" x 79" 60GR
HSB-3003-80	11-7/8" x 79" 80GR
HSB-3004-40	11-7/8"x91" 40GR
HSB-3004-60	11-7/8" x 91" 60GR
HSB-3005-40	12"x 89"SC 40GR
HSB-3006-40	14" x 107-1/4" 40GR
HSB-3006-60	14" x 107-1/4" 60GR
HSB-3007-40	11-7/8" x 89" 40GR
HSB-3007-60	11-7/8" x 89" 60GR
HSB-3010-40	14" x 103" 40GR
HSB-3010-60	14" x 103" 60GR
HSB-3041-40	11-1/4" X 76" 40GR
HSB-3041-60	11-1/4" X 76" 60GR
HSB-3055-40	14-1/2" x 99" 40GR
HSB-3055-60	14-1/2" x 99" 60GR
ZIRCONIA ALUMINA	
HSB-4001-36	14"x107"KW AZ HD 36GR
HSB-4031-36	15"x127-1/2" 36GR

PORTABLE POLISH BELTS

PRODUCT NO.	DESCRIPTION
AB1100-320-1	1" x 30" 320GR

PREMIUM ALUMINUM OXIDE MINERAL BONDED TO A FLEXABLE COTTON CLOTH BACKING PROVIDING QUALITY, PERFORMANCE, AND PRODUCTIVITY. FOR GENERAL METAL WORK APPLICATIONS.